



REFRIGERATED SHOWCASES

SERVING THE FOOD INDUSTRY SINCE 1951

SQUARE GLASS REFRIGERATED SUSHI SHOWCASES

Items 43492 / 44393 / 44394 / 44395

Model RS-CN-0044 / RS-CN-0064 / RS-CN-0084 / RS-CN-0104

Omcan's square glass refrigerated sushi showcases are perfect for merchandising a variety of sushi, keeping them fresh and delicious. Ideal for sushi bars and restaurants.



WARRANTY
PARTS AND LABOR



NEMA
5 - 15
125 VAC / 15 AMP
RECEPTACLE



Authorized Dealer

REFRIGERATED SHOWCASES

SQUARE GLASS REFRIGERATED SUSHI SHOWCASES



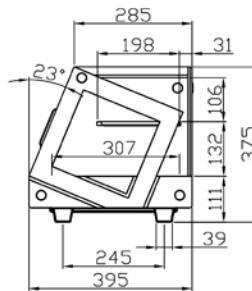
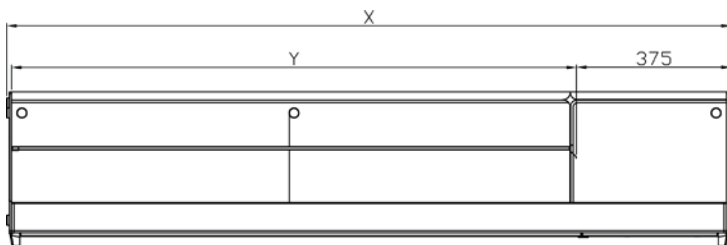
FEATURES

- Brilliant Internal LED illumination on top
- Digital temperature controller and display
- Front flat glass
- Sliding doors
- Direct cooling system
- GN pan can be ordered



TECHNICAL SPECIFICATIONS

ITEM NUMBER	43492	44393	44394	44395
MODEL	RS-CN-0044	RS-CN-0064	RS-CN-0084	RS-CN-0104
VOLUME	44 L / 1.55 cu. ft.	64 L / 2.26 cu. ft.	84 L / 2.96 cu. ft.	104 L / 3.67 cu. ft.
POWER	160 W			
REFRIGERANT	R290			R134A
STORAGE TEMPERATURE	0°C - 12°C / 32°F - 53.6°F			
ELECTRICAL	110V / 60Hz / 1Ph			
NUMBER OF PANS	4 x 1/3 GN	5 x 1/3 GN	6 x 1/3 GN	5 x 1/2 GN
DIMENSIONS (WDH)	44.5" x 15.6" x 14.7" 1131 x 395 x 375mm	51.4" x 15.6" x 14.7" 1307 x 395 x 375mm	58.4" x 15.6" x 14.7" 1483 x 395 x 375mm	69" x 15.6" x 14.7" 1754 x 395 x 375mm
PACKAGING DIMENSIONS	46.7" x 18.3" x 16.9" 1187 x 465 x 430mm	53.7" x 18.3" x 16.9" 1363 x 465 x 430mm	60.6" x 18.3" x 16.9" 1539 x 465 x 430mm	71.3" x 18.3" x 16.9" 1810 x 465 x 430mm
NET WEIGHT	86 lbs. / 39 kg.	94.8 lbs. / 43 kg.	103.6 lbs. / 47 kg.	116.8 lbs. / 53 kg.
PACKAGING WEIGHT	92.6 lbs. / 42 kg.	101.4 lbs. / 46 kg.	110.2 lbs. / 50 kg.	125.7 lbs. / 57 kg.



ITEM	X	Y
43492	44.5" / 1131mm	29" / 744mm
44393	51" / 1307mm	36" / 920mm
44394	58" / 1483mm	43" / 1096mm
44395	69" / 1754mm	53" / 1367mm

update: July 22, 2021

OMCAN INC.

Telephone: 1-800-465-0234
 Fax: (905) 607-0234
 Email: sales@omcan.com
 Website: www.omcan.com



Follow us to keep up to date with the latest news and offers



2018.E.O.E